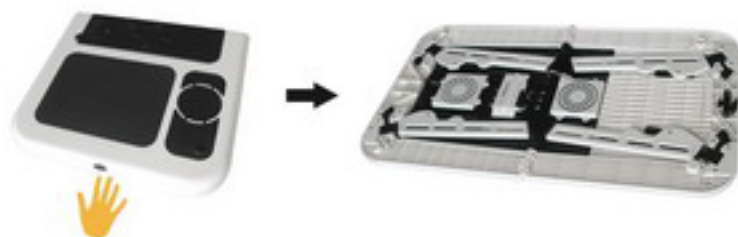
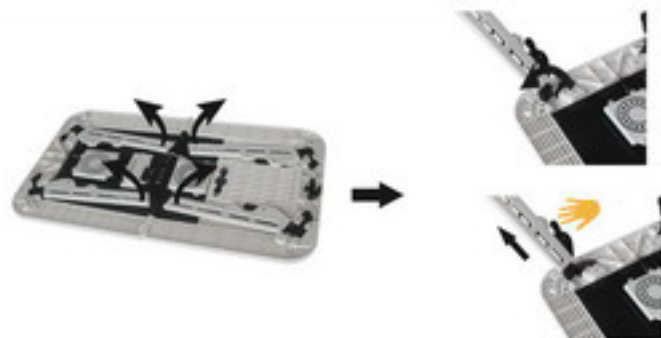


How to open

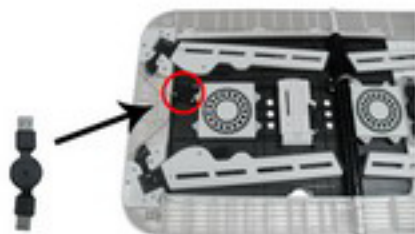


1. Press the button to open the table.



2. Open the legs, and use the lockers to lock the legs.

Legs lengths are adjustable by pressing the switches on the legs.



3. If USB is needed when using a PC, insert one end into a USB socket near the left fan, the other end into the PC, the fan thus starts running.



4. Take out the table board, use a supporter behind the board to adjust the height of the board.

Turn out the stoppers at the bottom of the board to support the computer or books.